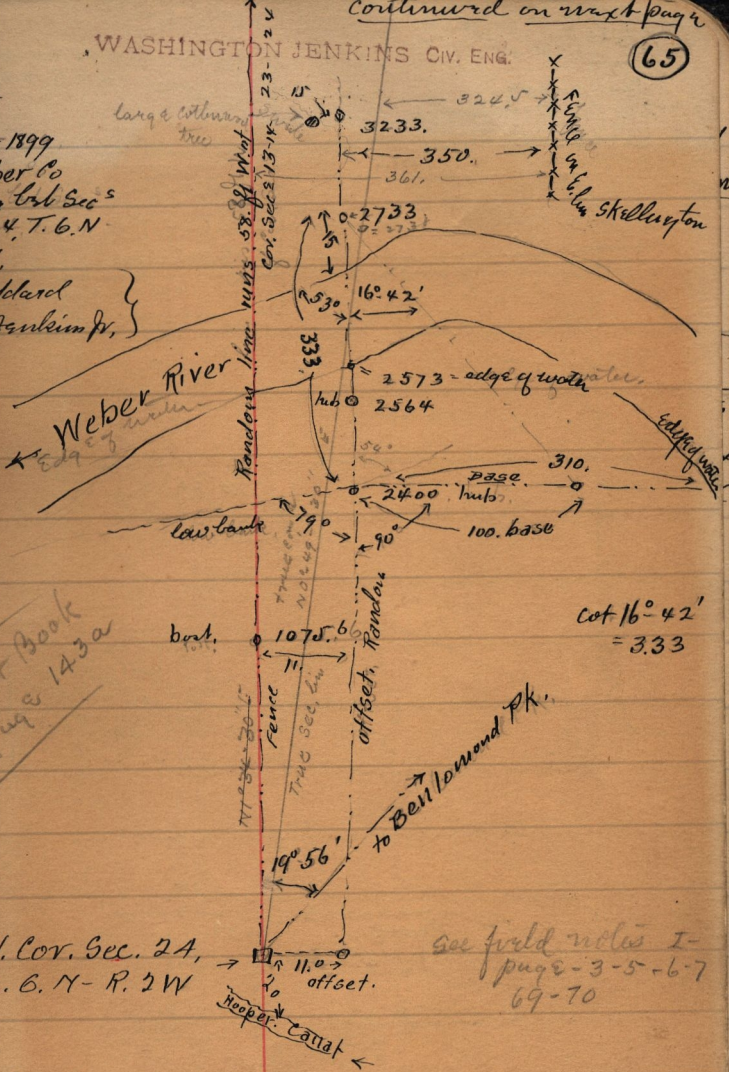


Continued on next page

Feb. 13-1899
 For Weber Co
 Ran Linc Cor Secs
 23 & 24 T. 6. N.
 R. 2. W.
 John Stoddard
 David Jenkinson



See Plat Book
 page 143a

cot $16^{\circ} 42'$
 = 3.33

S.W. Cor. Sec. 24,
 T. 6. N - R. 2 W

see field notes I-
 page 3-5-6-7
 69-70

2400.
 2733

 333